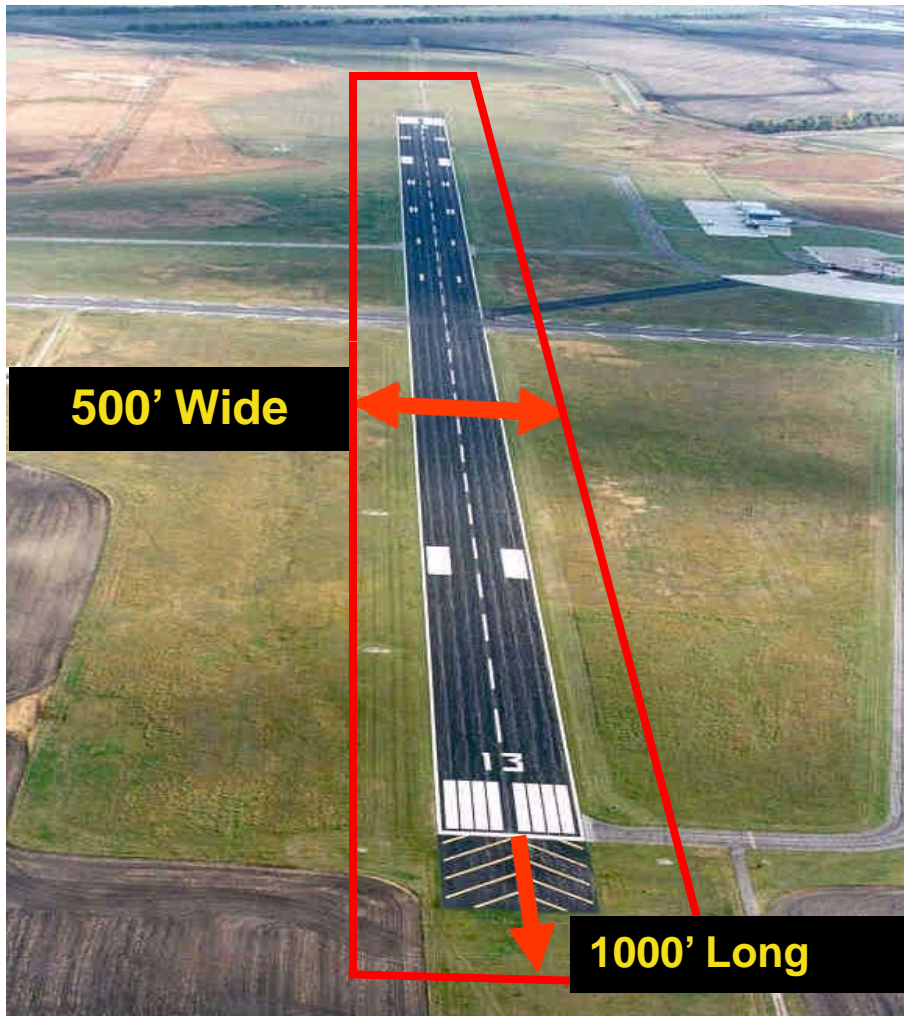


***John F. Kennedy International Airport
Property Acquisition – Runway 4L
Runway Safety Area***

Committee on Operations

February 6, 2013

Runway Safety Area (RSA) Standards



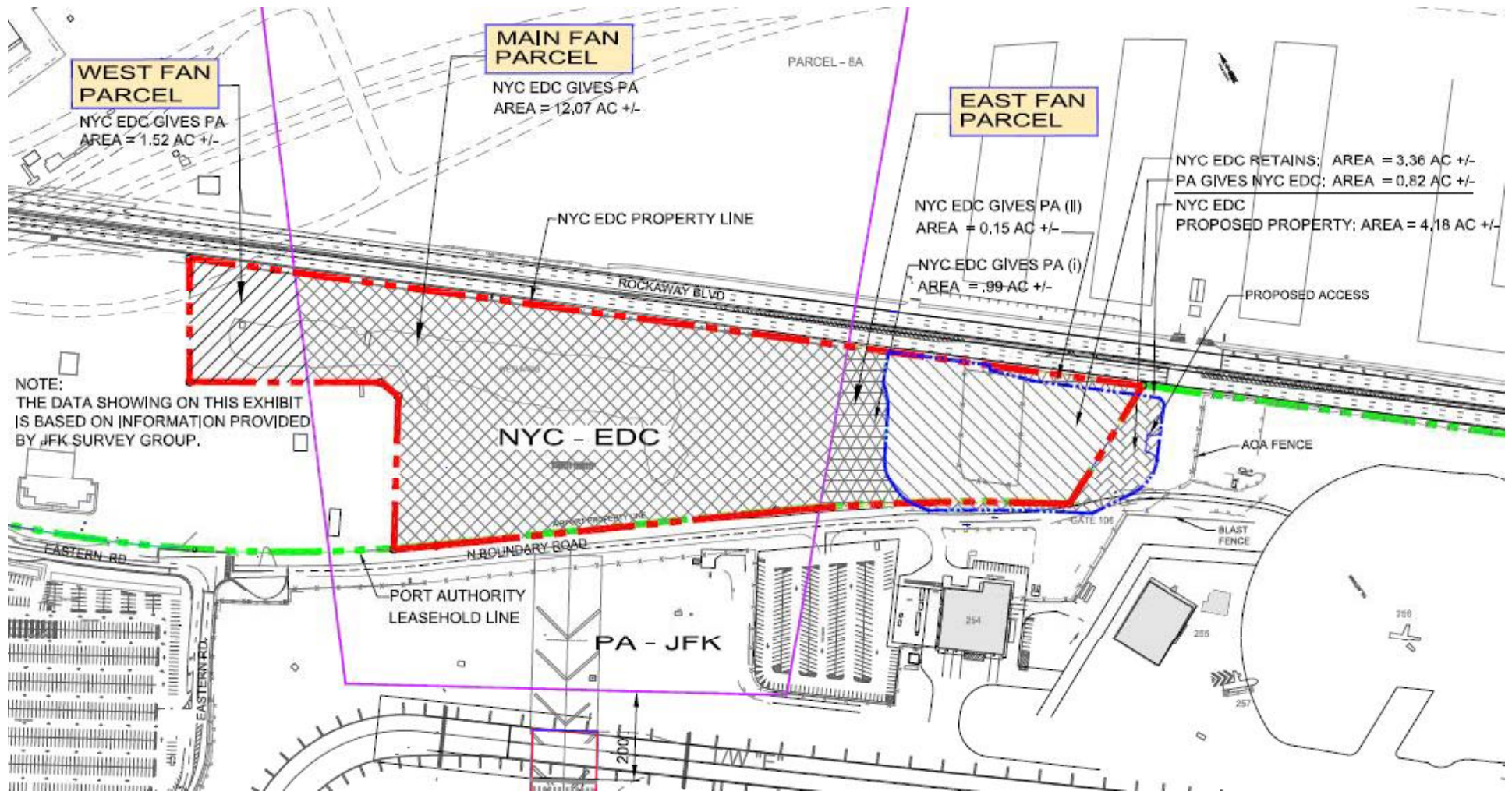
Improvements by 2015

- 1,000 feet at each end
- 250 feet from centerline

Runway 4L-22R Improvements

- Extend pavement area
- Move up runway thresholds
- Install RSA at each end

NYC EDC Site



Site Plan and Land Acquisition Terms

