

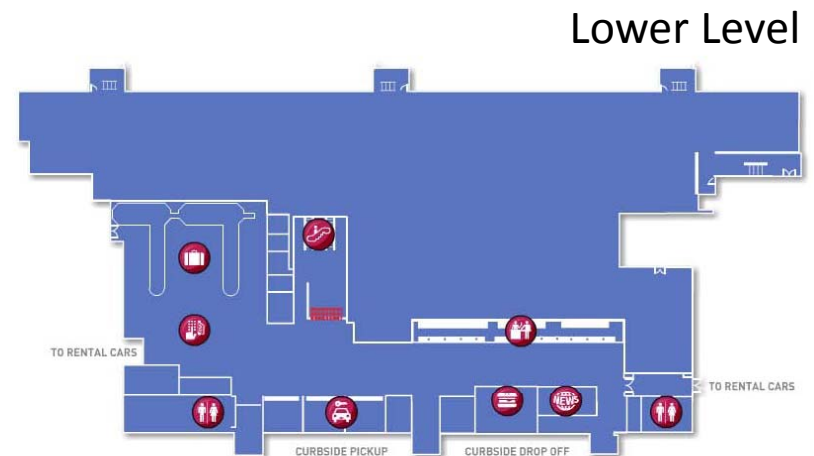
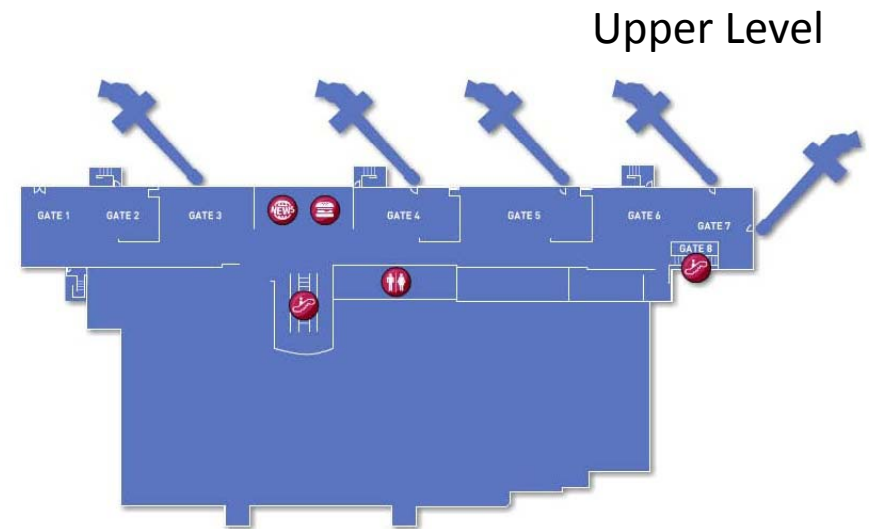
Stewart International Airport Terminal Expansion – Project Authorization

Committee on Construction

December 8, 2011

SWF Passenger Terminal Concourse – 1997

- Seven Gates
- Hardstand for International Arrivals
- Capacity:
1 Million Annual Passengers



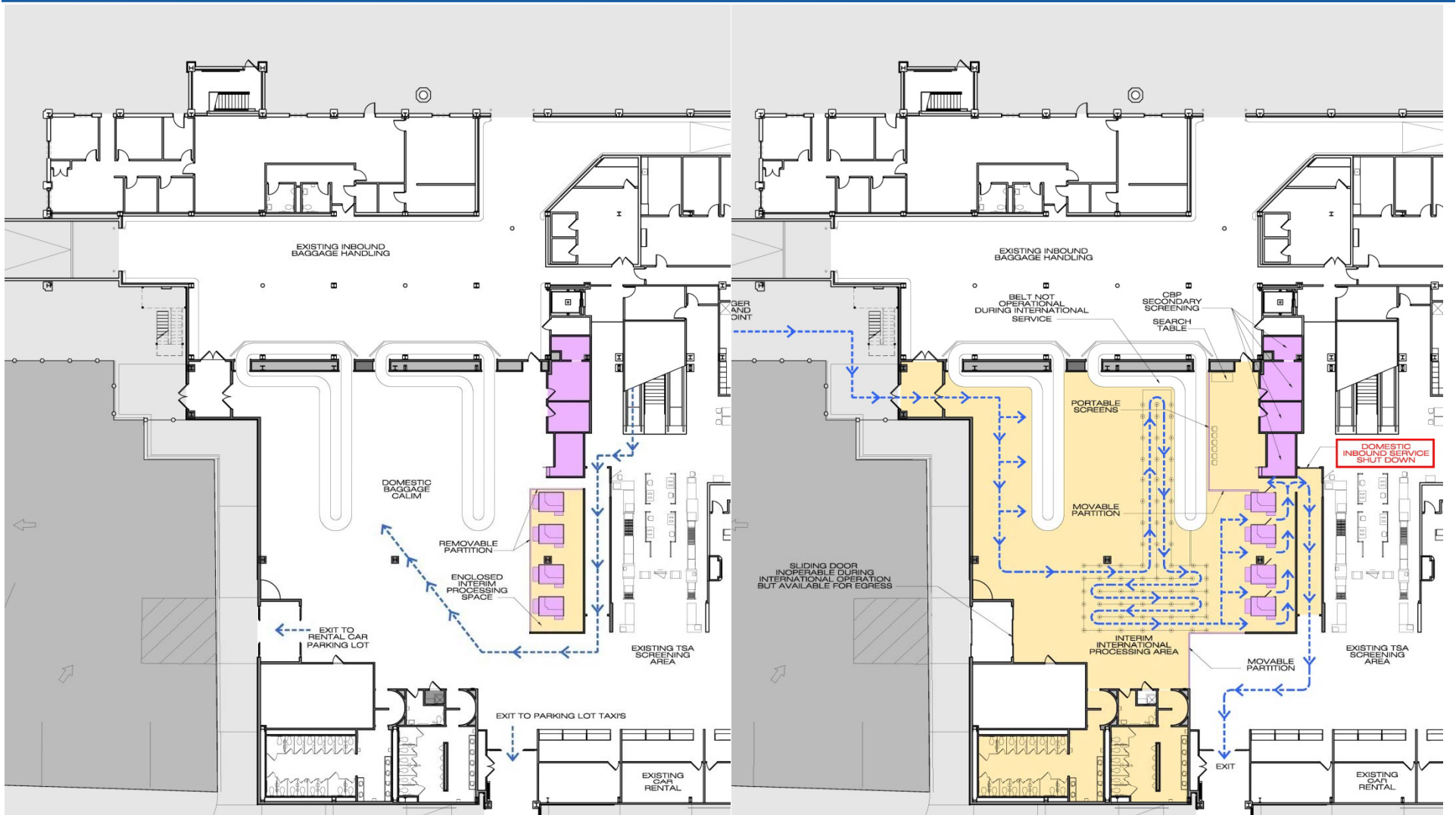
Planning for Current and Long-Term Needs

The Efficient, Economical Gateway for Travelers and Cargo

- Accommodate International Service
- Allow increased International Diversion Activity
- Plan for Future Demand



Interim Federal Inspection Service

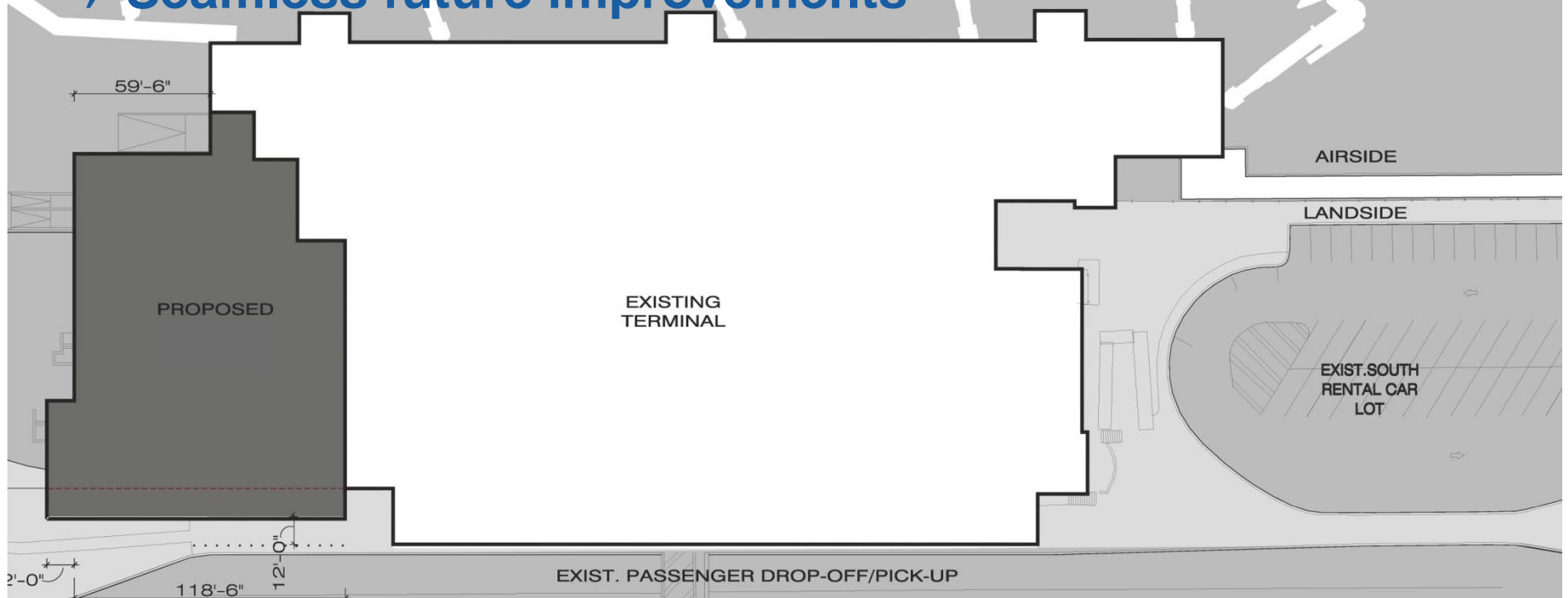


Domestic Operations

International Operations

Terminal Expansion

- 31,500 square foot expansion
- Relocation of existing interim FIS
- Simultaneous handling of domestic and international
- Seamless future improvements



Cost and Schedule

Project Authorization

- \$19.9 million
 - Consultants—\$0.15 million
 - Staff—\$3.15 million

Economic Impact

- 120 jobs
- \$8 million in wages
- \$33 million in economic impact

Schedule

- Contract award Q1 2013
- Construction completion Q4 2014

