

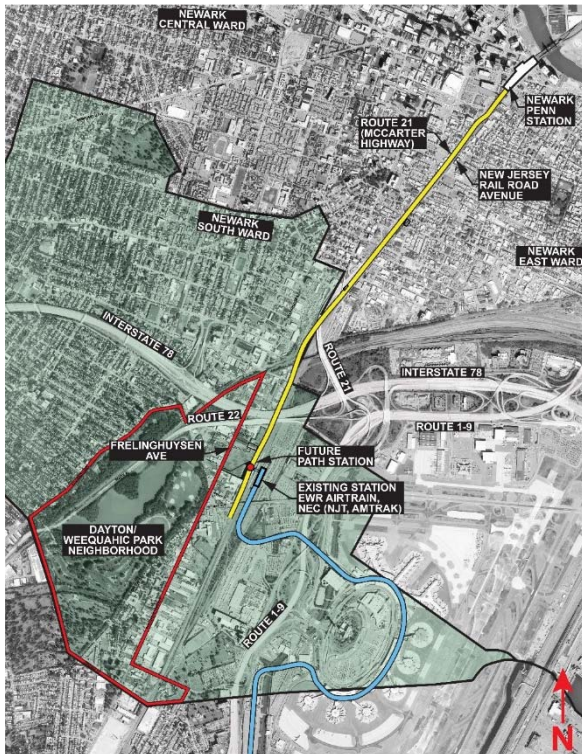


Capital Planning, Execution & Asset Management Committee

April 27, 2017

THE PORT AUTHORITY OF NY & NJ

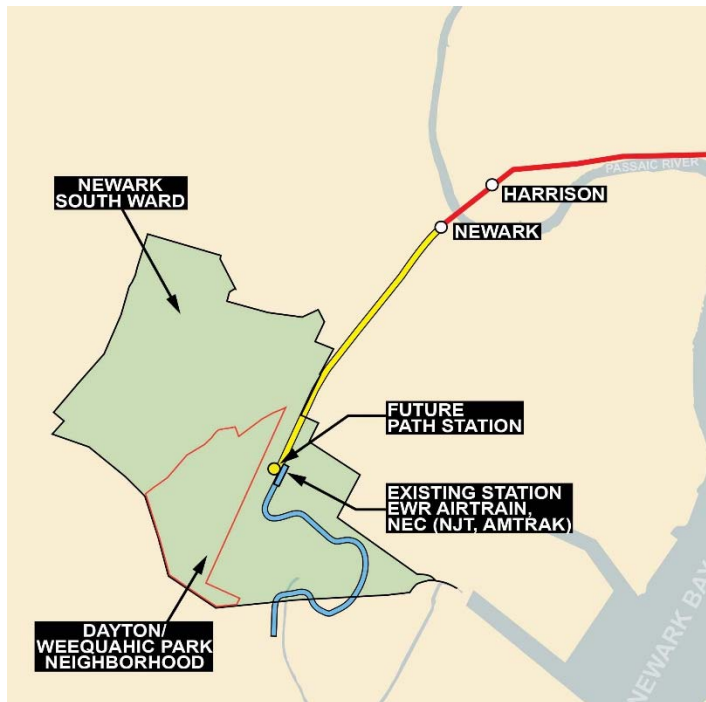
Port Authority Trans-Hudson (PATH) Rapid Rail Transit System Extension to Newark Liberty Rail Link Station – Planning Authorization



- The project will improve transit access to Newark, Jersey City, and New York City for commuters, and increase transit options to Newark Liberty International Airport (EWR).
- The project will include:
 - Extending the PATH rail infrastructure from Newark Penn Station to the Newark Liberty Rail Link Station at EWR
 - A new PATH station at the Newark Liberty Rail Link Station in Newark's South Ward, accessible to pedestrians, buses and auto drop-offs
 - Construction of a new rail yard facility and 22 rail cars

Port Authority Trans-Hudson (PATH) Rapid Rail Transit System Extension to Newark Liberty Rail Link Station – Planning Authorization

Planning Authorization \$57M



- Includes \$17M in previously authorized funds
- The planning effort will seek a Record of Decision by the US Department of Transportation in accordance with National Environmental Policy Act (NEPA), and/or other applicable federal, state or local review processes.
- Includes funds to HNTB New York Engineering and Infrastructure Solutions for continued expert professional program & project management services – \$12M
- Includes funds to AKRF, Inc. for additional expert professional environmental & transportation services including preliminary engineering design work to support the environmental review – \$18M