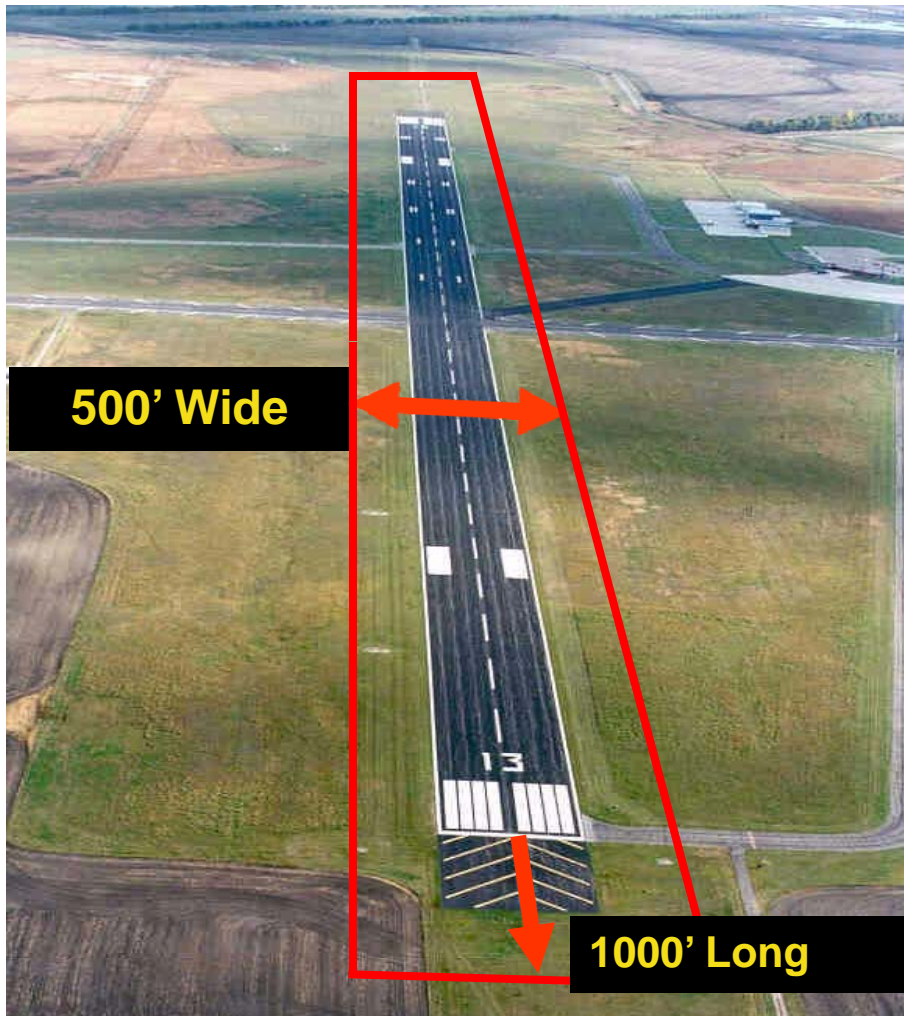


# ***John F. Kennedy International Airport Land Acquisition***

Committee on Operations

November 18, 2010

# Runway Safety Area (RSA) Standards



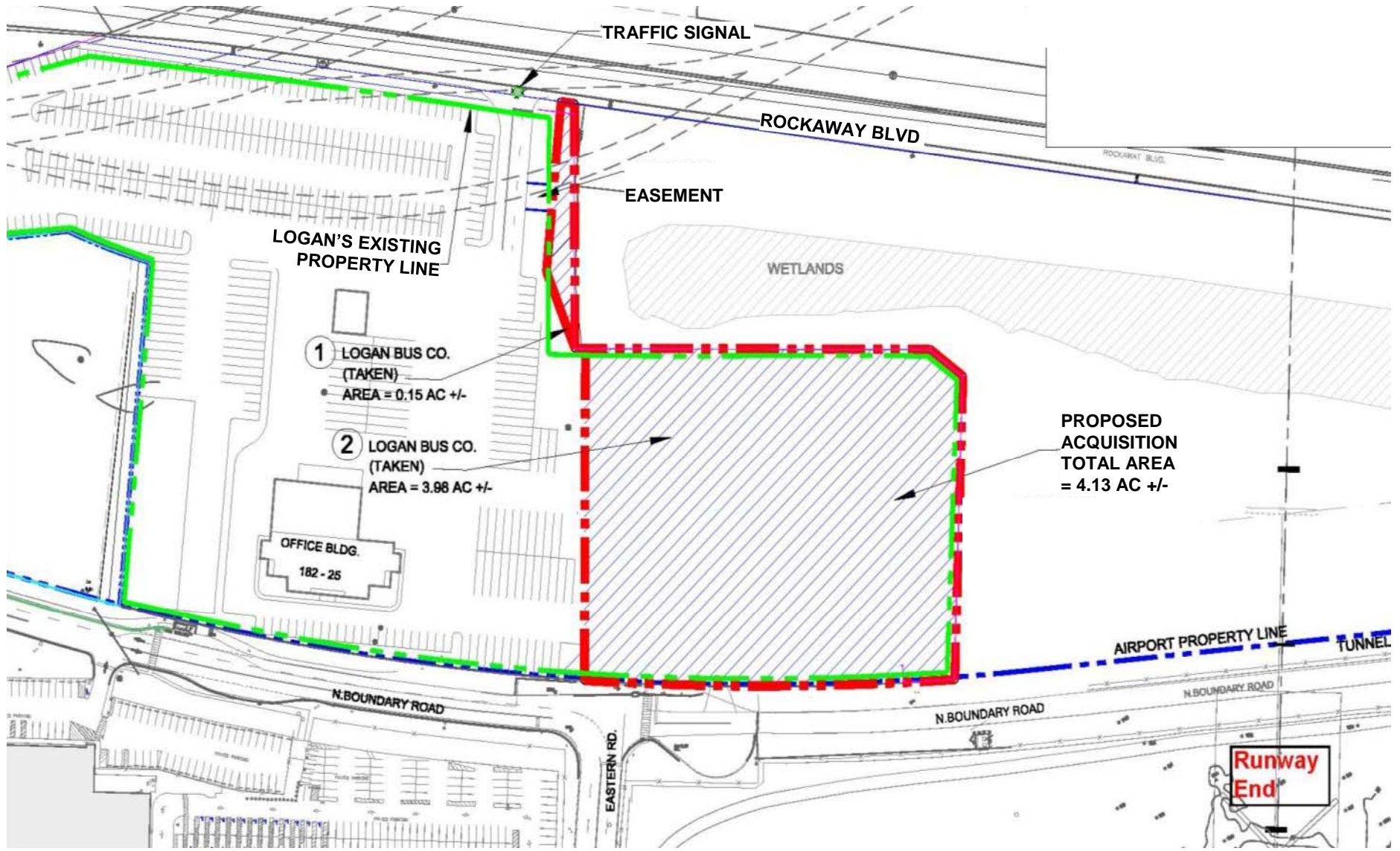
## Improvements by 2015

- 1,000 feet at each end
- 250 feet from centerline

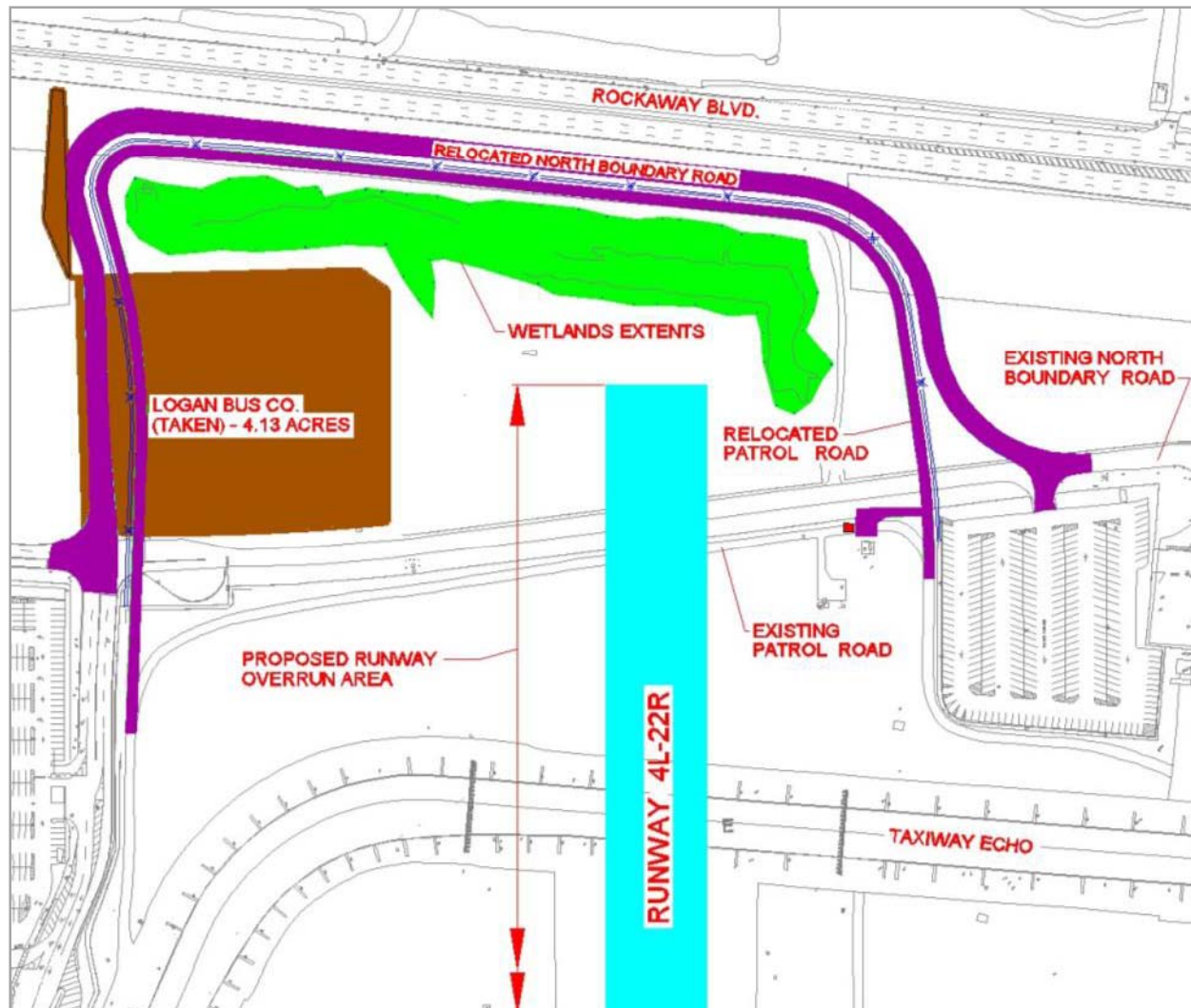
## Runway 4L-22R Improvements

- Extend pavement area
- Move up runway thresholds
- Install RSA at each end

# Logan Property, Inc. Site



# Site Plan and Land Acquisition Terms



## Land Acquisition

- 4.13 Acres
- \$2.4 Million

## Port Authority

- Future easement to Logan Property

## Logan Bus

- Use of airport roadways, water and sanitary lines

# Runway 4L-22R RSA Improvements

