

Newark Liberty International Airport Terminal A Redevelopment Program

An aerial photograph of Newark Liberty International Airport, showing Terminal A and the surrounding tarmac. The terminal is a long, white, modern structure with a distinctive curved roof. Numerous commercial aircraft are parked at gates along the terminal. The tarmac is paved and marked with various lines and numbers. In the background, there are other airport buildings and a large stadium-like structure.

Committee on Capital Planning, Executive & Asset Management
December 7, 2017

Background



Terminal A Program Elements

- \$2.3 billion (authorized in March 2016)
- 33 gate terminal project
- 140 acres of airfield
- 8 Bridges and at-grade roadway network
- Approx. 3,000 space parking garage complex

Prior Authorization (March 2016)

- Expenditure of up to \$196.3 million
- PFC Application submission for corresponding amount

Airside/Landside Program Elements

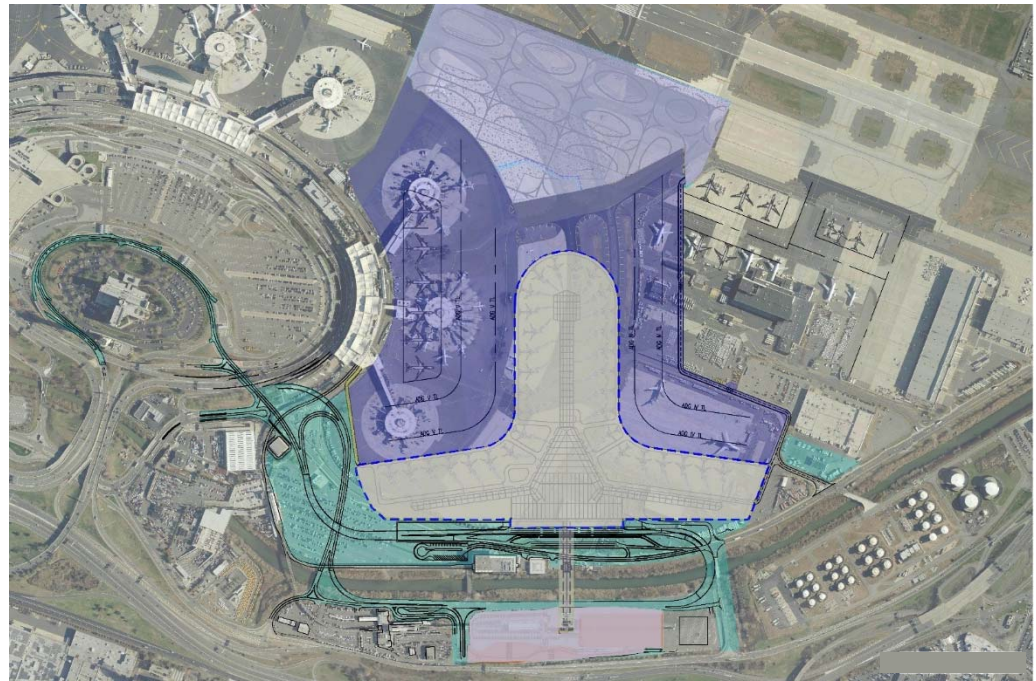
Authorize the expenditure of \$496M for:

Airside Elements - \$315M

- 140 acres of paving
- Demolition of existing buildings, concourses, and satellites
- Re-grading, installation of drainage, repaving, striping, and airfield signage, taxi lane lighting

Landside Elements - \$181M

- Construction of 4 new bridge structures
- Site grading, utility work, new curbing, paving, drainage and signage



Additional New Authorizations

- **South Airfield Paving – Total Project Cost: \$175 million**
 - 40 acres of airside paving to provide necessary aircraft parking
- **AirTrain Footings – Total Project Cost: \$75 million**
 - Design and Construct 42 AirTrain footings located the roadway right of way at future terminal frontage
- **Consolidated Rental Car Facility – Phase II Feasibility Study**

(Appropriate offsets have been identified)

Program Cost Summaries

Program Authorization:	\$2.36B
– Prior Authorizations:	\$ 221M
– <u>Requested Program Expenditure:</u>	<u>\$ 496M</u>
– Total Authorized Expenditure:	\$ 717M
Additional Project Authorizations	\$250M
– Additional Airside Paving Project	\$ 175M
– Certain AirTrain Footings Project	\$ 75M
ConRAC Feasibility Analysis – Phase II	\$ 8M

Economic Impacts

Terminal A Airside Elements:

3,003 job-years; \$241 million in wages;
\$601 million in economic activity

Terminal A Landside Elements:

4,177 job-years; \$336 million in wages;
\$836 million in economic activity

South Airfield Paving

1,550 job-years; \$125 million in wages;
\$312 million in economic activity

AirTrain Footings

650 job-years; \$54.1 million in wages;
\$133.2 million in economic activity



