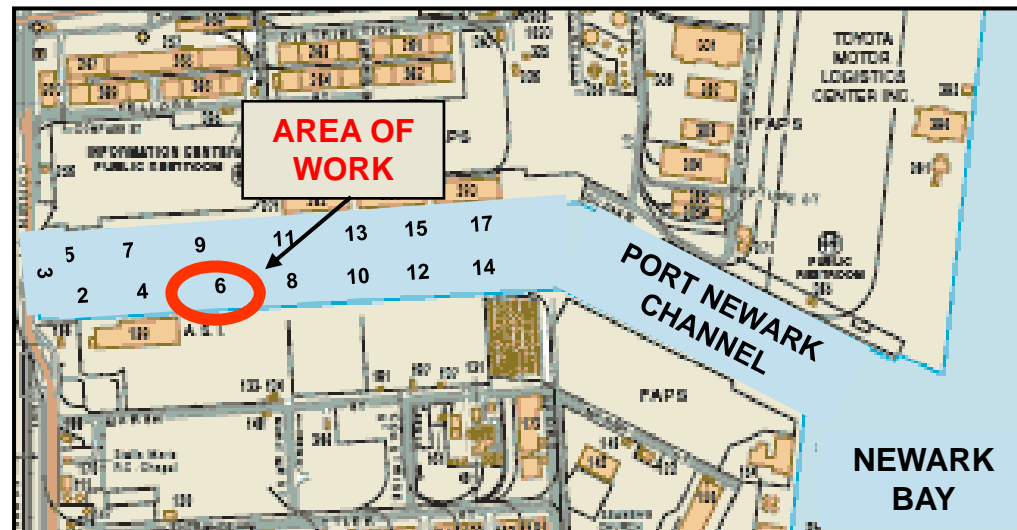


***Port Newark – Berth 6 – Wharf
Reconstruction – Project Authorization***

**Committee on Construction
August 5, 2010**

Berth 6 Wharf Reconstruction Background

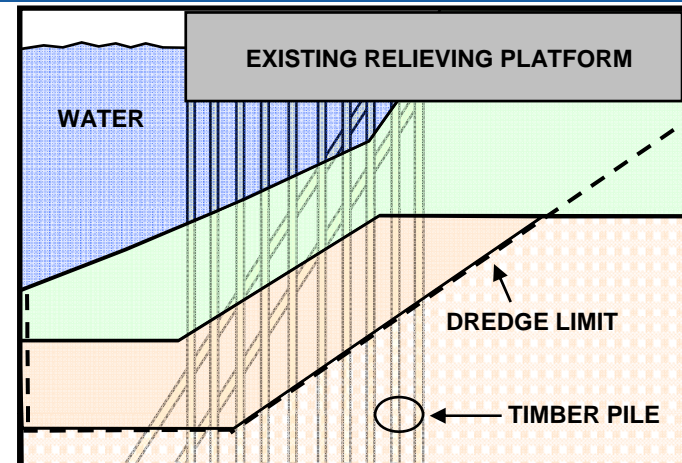
- 45-year old wharf structure supported by timber piles
- Progressive and extensive marine borer damage
- Maintain deck loading capacity for current and future operations



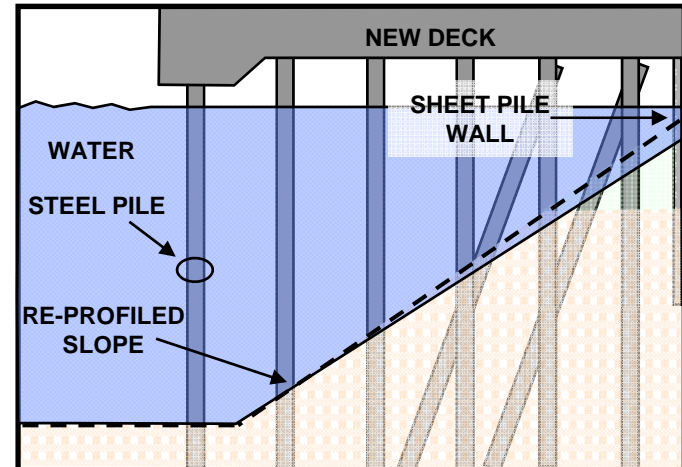
PORT NEWARK FACILITY MAP

Berth 6 Wharf Reconstruction Requested Authorization

- \$43 million project to reconstruct the wharf structure at Berth 6 at Port Newark
- Scope of Work includes:
 - Demolition of the relieving platform, concrete deck and timber piles
 - Relocation of the existing utilities
 - Construction of a steel pile supported concrete deck
 - Dredging along the face of the wharf to 45 feet
 - Transporting and disposal of dredged and stone material
- Construction Schedule: November 2010 - March 2013



EXISTING WHARF CONDITIONS



FINAL WHARF CONDITIONS

Berth 6 Wharf Reconstruction Project Benefits

- **Restore full serviceability and achieve a renewed 50-year service life to the wharf structure**
- **Increase load capacity for safe cargo handling**
- **Will support 180 direct and indirect jobs over the life of the project, with a total economic impact of \$12 million in wages and over \$64 million in economic activity**